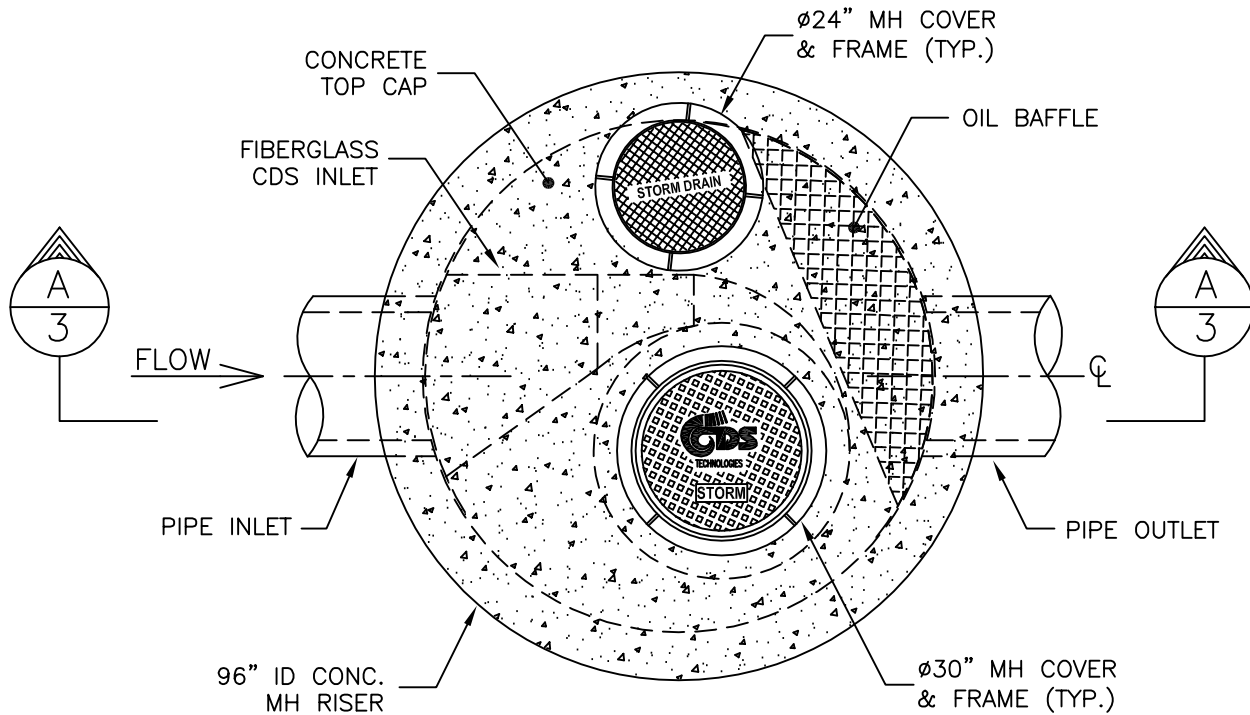


# PLAN VIEW



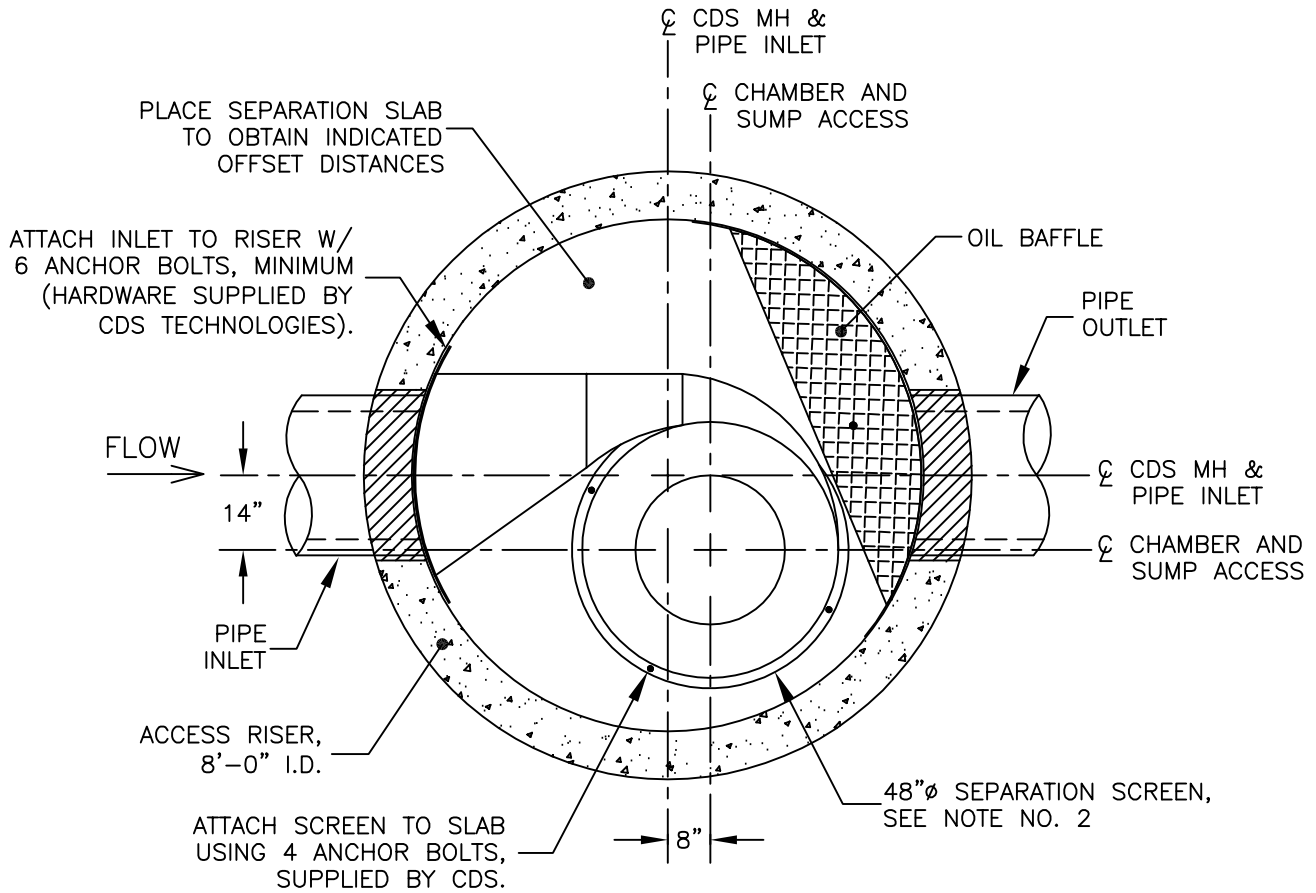
**NOTE:**

THE INTERNAL COMPONENTS ARE SHOWN IN THE RIGHT-HAND CONFIGURATION—THESE COMPONENTS MAY BE FURNISHED IN THE MIRROR IMAGE TO THAT SHOWN (LEFT-HAND CONFIGURATION).

## CDS MODEL PMSU40\_30, STORMWATER TREATMENT UNIT

	<b>PROJECT/ DEVELOPMENT NAME CITY &amp; STATE</b>	JOB#	SCALE 1"=3'
		DATE: 7/16/04	SHEET
		DRAWN: Name	1
		APPROV.	
16360 S. MONTEREY RD. SUITE 250 MORGAN HILL, CA. 95037 TEL: (888) 535-7559			

# SECTION B-B



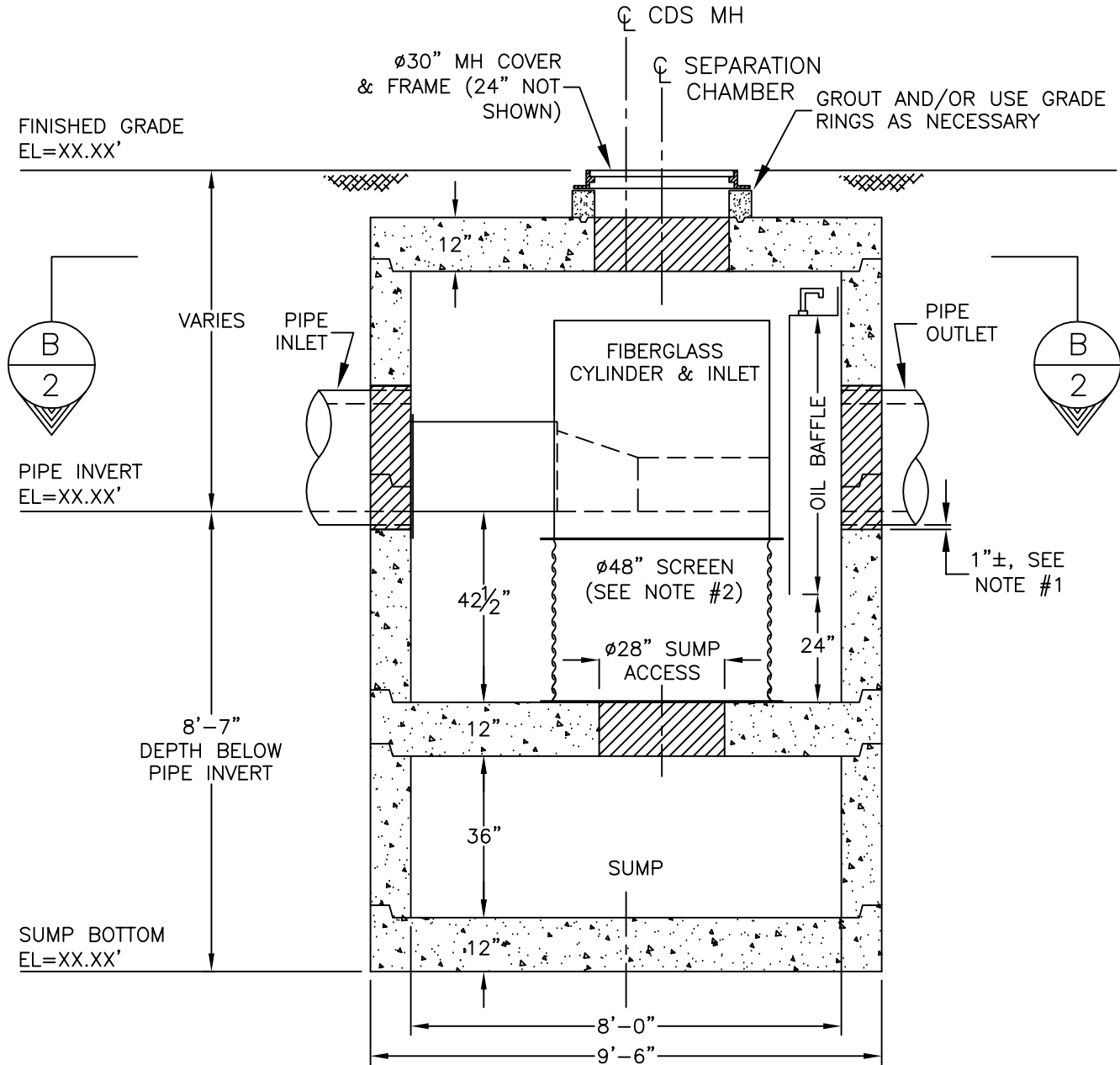
**NOTES:**

1. THE INTERNAL COMPONENTS ARE SHOWN IN THE RIGHT-HAND CONFIGURATION.
2. FOR PROPER INSTALLATION, GREEN FLANGE ON SCREEN FACES UP; RED FLANGE FACES DOWN & FASTENS TO SEPARATION SLAB.
3. OVERSIZED CORES ARE PROVIDED TO ACCOUNT FOR DIFFERENT PIPEWALL THICKNESSES—ENSURE SUFFICIENT EXCAVATION DEPTH TO ATTAIN (EXTERNAL) SUMP INVERT ELEVATION (SEE SHEET 3).

## CDS MODEL PMSU40\_30, STORMWATER TREATMENT UNIT

	<b>PROJECT/ DEVELOPMENT NAME CITY &amp; STATE</b>	JOB#	SCALE 1"=3'
		DATE: 7/16/04	SHEET
		DRAWN: Name	2
		APPROV.	

# SECTION A-A ELEVATION VIEW



**NOTES:**

1. OVERSIZED CORES ARE PROVIDED TO ACCOUNT FOR DIFFERENT PIPEWALL THICKNESSES—ENSURE SUFFICIENT EXCAVATION DEPTH TO ATTAIN INDICATED (EXTERNAL) SUMP INVERT ELEVATION.
2. FOR PROPER INSTALLATION, GREEN FLANGE ON SCREEN FACES UP & FASTENS TO FIBERGLASS CYLINDER FLANGE; RED FLANGE FASTENS TO SEPARATION SLAB WITH PROVIDED ANCHOR BOLTS.

## CDS MODEL PMSU40\_30, STORMWATER TREATMENT UNIT

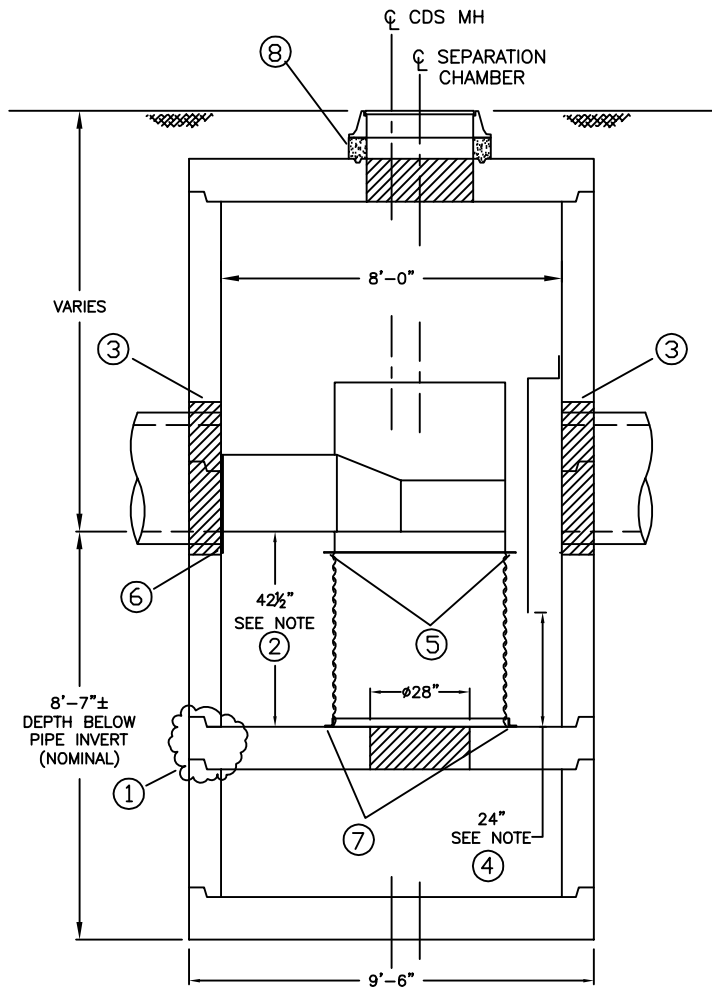


**PROJECT/ DEVELOPMENT  
NAME  
CITY & STATE**

JOB#	
DATE:	7/16/04
DRAWN:	Name
APPROV.	


SCALE  
1"=3'  
SHEET

3



**CONSTRUCTION NOTES:**

1. APPLY BUTYL MASTIC AND/OR GROUT TO SEAL JOINTS OF MANHOLE STRUCTURE. APPLY LOAD TO MASTIC SEAL IN JOINTS OF MH SECTIONS TO COMPRESS SEALANT IF NECESSARY. UNIT MUST BE WATER TIGHT, HOLDING WATER UP TO FLOWLINE INVERT (MINIMUM).
2. IF SEPARATION SLAB IS NON-INTEGRAL TO THE SEPARATION SECTION OF THE UNIT, SET AND VERIFY TOP ELEVATION BEFORE PLACING MORE PRECAST COMPONENTS OR BACKFILLING. ENSURE 42.5" FROM TOP OF SEPARATION SLAB TO PIPE INVERT.
3. GROUT PIPE CONNECTIONS TO SEAL JOINT.
4. SET BOTTOM OF OIL BAFFLE 24" ABOVE SEPARATION SLAB FLOOR; DRILL AND INSERT A MINIMUM OF FOURTEEN (14)  $\frac{3}{8}$ " x  $3 \frac{3}{4}$ " SS EXPANSION BOLTS @ 12 O.C. EQUALLY SPACED TO SECURE BAFFLE FLANGE TO RISER WALL—(HARDWARE SUPPLIED BY CDS TECHNOLOGIES).
5. FASTEN FIBERGLASS CYLINDER/INLET TO SCREEN ASSEMBLY USING FOUR (4) SETS OF  $\frac{1}{2}$ " x  $1 \frac{1}{2}$ " SS HEX HEAD BOLTS W/ NUTS AND WASHERS—(HARDWARE SUPPLIED BY CDS TECHNOLOGIES). IN THE LEFT-HANDED CONFIGURATION THE "RED" COLORED FLANGE ON THE SCREEN CYLINDER SHALL FACE UP. IN THE RIGHT-HANDED CONFIGURATION, THE "GREEN" COLORED FLANGE SHALL FACE UP.
6. DRILL AND INSERT A MINIMUM OF SIX (6)  $\frac{3}{8}$ " x  $3 \frac{3}{4}$ " SS EXPANSION BOLTS EQUALLY SPACED TO SECURE FIBERGLASS INLET FLANGE TO RISER WALL—(HARDWARE SUPPLIED BY CDS TECHNOLOGIES).
7. VERIFY THAT SCREEN ASSEMBLY IS CENTERED OVER SUMP ACCESS HOLE AND ADJUST IF NECESSARY; FASTEN SCREEN TO SEPARATION SLAB USING FOUR (4)  $\frac{3}{8}$ " x  $3 \frac{3}{4}$ " SS EXPANSION BOLTS—(HARDWARE SUPPLIED BY CDS TECHNOLOGIES).
8. BLOCK AND GROUT SEAL TO MATCH GRADE AS REQUIRED.

	<p>PMSU40_30 CONSTRUCTION NOTES</p>	JOB#	SCALE N.T.S.
		DATE: 9/11/01	SHEET
		DRAWN: J.S.F./W.S.	4
		APPROV.	
<p>16360 S. MONTEREY RD. SUITE 250 MORGAN HILL, CA. 95037 TEL: (888) 535-7559</p>			