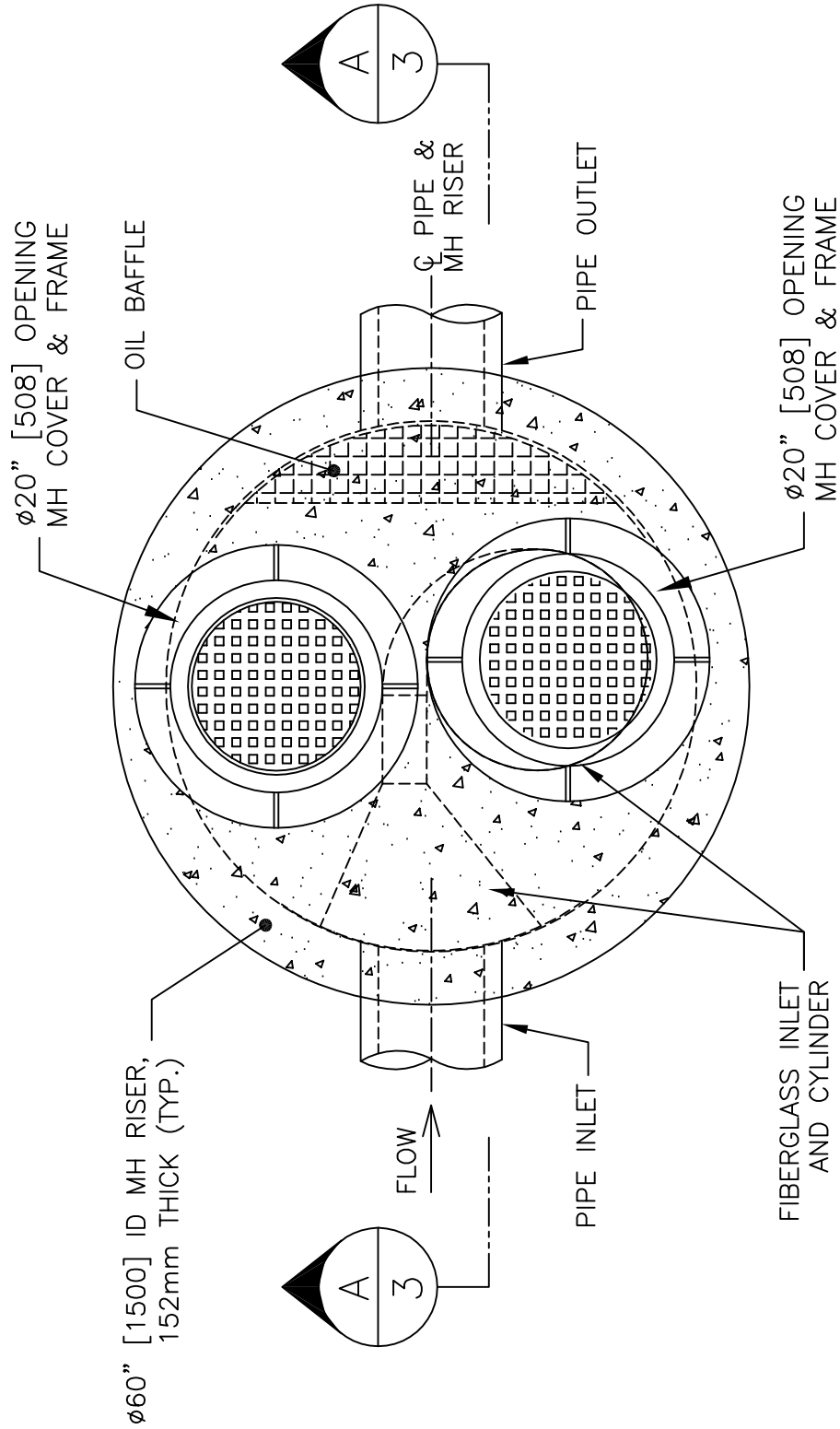


PLAN VIEW
TYPICAL / GENERIC
INSTALLATION



NOTE:
 THE INTERNAL COMPONENTS ARE SHOWN IN THE RIGHT-HAND CONFIGURATION—THESE COMPONENTS MAY BE FURNISHED IN THE MIRROR IMAGE TO THAT SHOWN (LEFT-HAND CONFIGURATION).

CDS MODEL PMSU20_20
STORM WATER TREATMENT UNIT



PROJECT NAME

JOB#

DATE:

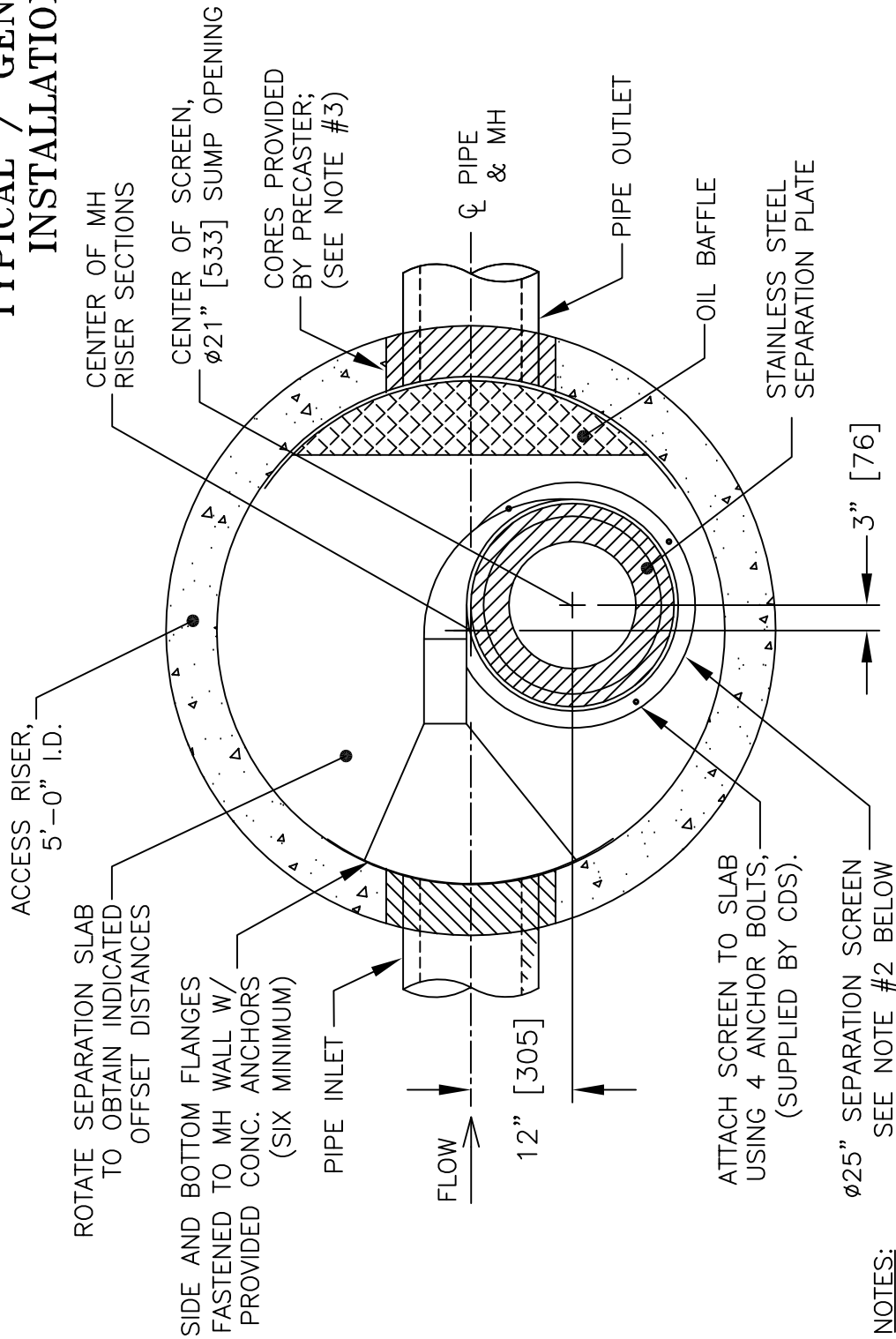
DRAWN:

APPROV.

SCALE
 1:20
 SHEET

1

SECTION B-B TYPICAL / GENERIC INSTALLATION



NOTES:

1. THE INTERNAL COMPONENTS ARE SHOWN IN THE RIGHT-HAND CONFIGURATION.
2. FOR PROPER INSTALLATION, GREEN FLANGE ON SCREEN FACES UP, RED FLANGE FACES DOWN FASTENING TO SEPARATION SLAB.
3. OVERSIZED CORES ARE PROVIDED TO ACCOUNT FOR DIFFERENT PIPEWALL THICKNESSES—ENSURE SUFFICIENT EXCAVATION DEPTH TO ATTAIN (EXTERNAL) SUMP INVERT ELEVATION (SEE SHEET 3).

**CDS MODEL PMSU20_20
STORM WATER TREATMENT UNIT**



PROJECT NAME

JOB#

DATE:

DRAWN:

APPROV.

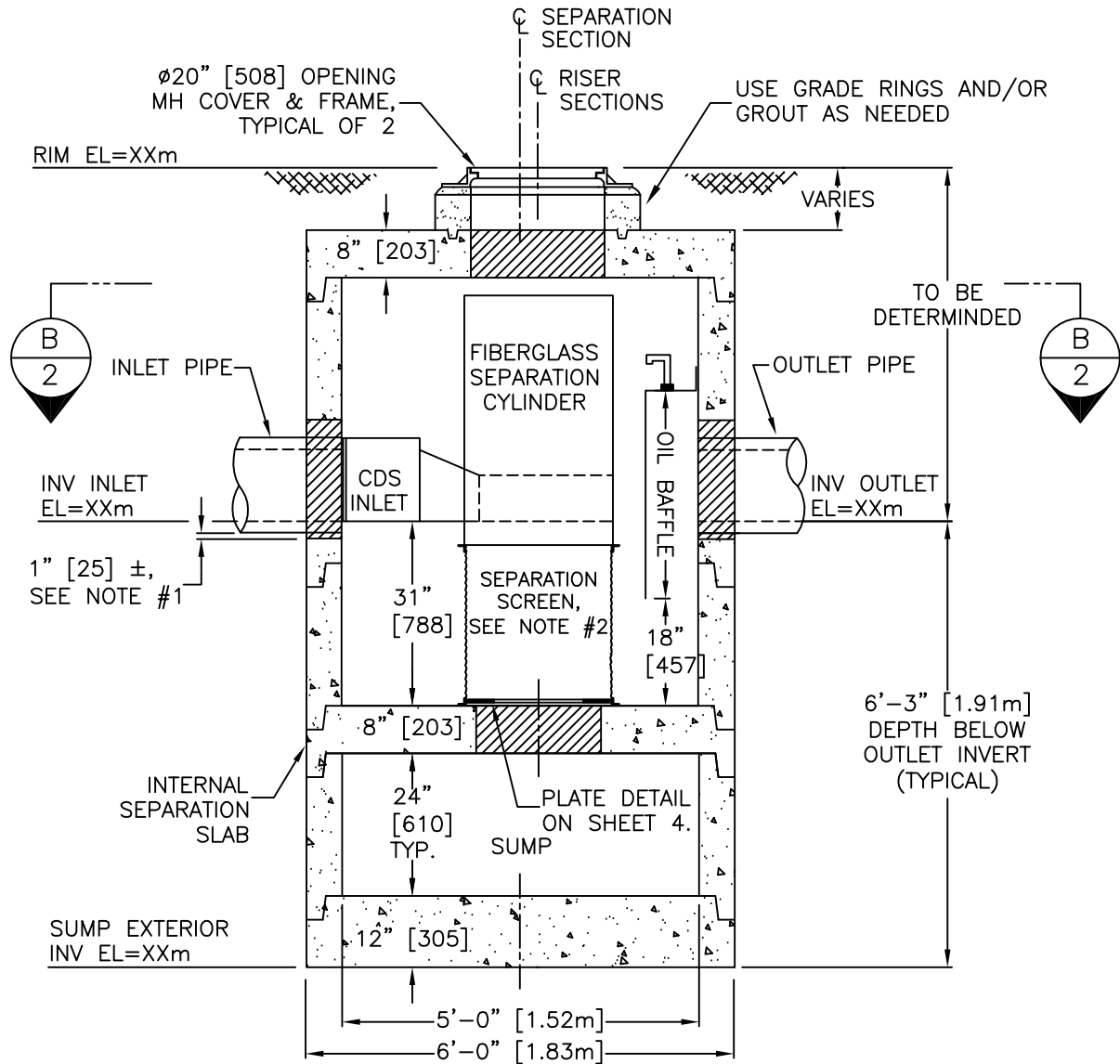
SCALE
1:20

SHEET

2

SECTION A-A ELEVATION VIEW

TYPICAL / GENERIC INSTALLATION



NOTES:

- OVERSIZED CORES ARE PROVIDED TO ACCOUNT FOR DIFFERENT PIPEWALL THICKNESSES—ENSURE SUFFICIENT EXCAVATION DEPTH TO ATTAIN INDICATED (EXTERNAL) SUMP INVERT ELEVATION.
- FOR PROPER INSTALLATION, GREEN FLANGE ON SCREEN FACES UP AND FASTENS TO FIBERGLASS CYLINDER FLANGE; RED FLANGE FASTENS TO SEPARATION SLAB WITH PROVIDED ANCHOR BOLTS.

CDS MODEL PMSU20_20 STORM WATER TREATMENT UNIT

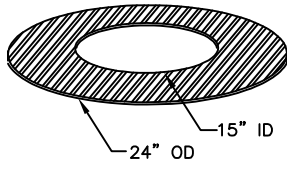


PROJECT NAME

JOB#	SCALE 1:30
DATE:	SHEET
DRAWN:	3
APPROV.	

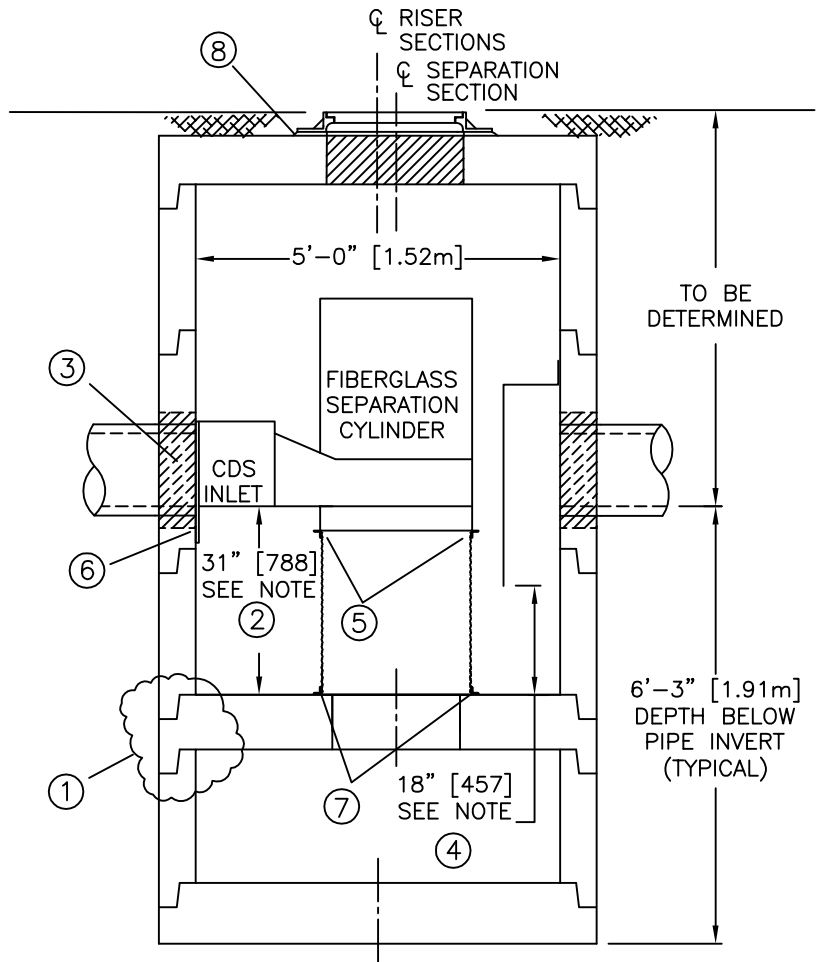
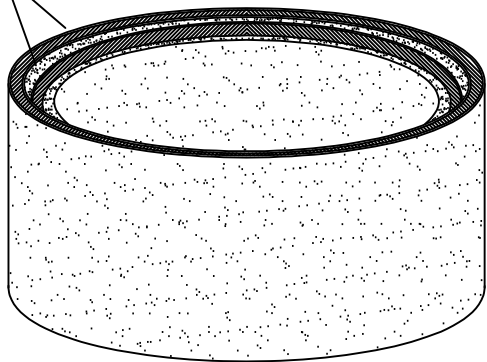
HYDRAULIC SHEAR PLATE
TYPE 316 STAINLESS, 11 GA.

USE WHEN ADDING
SORBENT MATERIAL



(NOT TO SCALE)

PLACE 2x CONTINUOUS BANDS OF MASTIC ROPE ON VERTICAL AND HORIZONTAL SURFACES OF SUMP (MH BASE) T&G JOINT; GROUT EXTERIOR MH JOINT IF NECESSARY.



CONSTRUCTION NOTES:

1. APPLY BUTYL MASTIC AND/OR GROUT TO SEAL JOINTS OF MANHOLE STRUCTURE; APPLY LOAD TO MASTIC SEAL IN JOINTS OF MH SECTIONS TO COMPRESS SEALANT IF NECESSARY—UNIT MUST BE WATER TIGHT, HOLDING WATER UP TO FLOWLINE INVERT (MINIMUM).
2. IF SEPARATION SLAB IS NON-INTEGRAL TO THE SEPARATION SECTION OF THE UNIT, SET AND VERIFY TOP ELEVATION BEFORE PLACING MORE PRECAST COMPONENTS OR BACKFILLING; ENSURE 31" [788mm] FROM TOP OF SEPARATION SLAB TO PIPE INVERT.
3. SET BOTTOM OF OIL BAFFLE 18" [457mm] ABOVE SEPARATION SLAB FLOOR; DRILL AND INSERT A MINIMUM OF TEN (10) $\frac{3}{8}$ " x $3\frac{3}{4}$ " SS EXPANSION BOLTS @ 304mm O.C. EQUALLY SPACED TO SECURE FIBERGLASS OIL BAFFLE FLANGE TO RISER WALL—(TYPE 316 STAINLESS STEEL HARDWARE PROVIDED BY CDS TECHNOLOGIES).
4. FASTEN FIBERGLASS INLET/CHAMBER TO SCREEN ASSEMBLY USING FOUR (4) SETS OF PROVIDED $\frac{1}{2}$ " x $1\frac{1}{2}$ " 316SS HEX HEAD BOLTS W/ NUTS AND WASHERS – FOR LEFT-HAND CONFIGURED UNITS, THE RED PAINTED FLANGE ON THE SCREEN CYLINDER SHALL FACE UP; IN THE RIGHT-HANDED CONFIGURATION, THE GREEN FLANGE SHALL FACE UP.
5. CENTER SCREEN ASSEMBLY OVER SUMP OPENING AND POSITION FIBERGLASS INLET AGAINST RISER WALL; DRILL AND INSERT A MINIMUM OF SIX (6) $\frac{3}{8}$ " x $3\frac{3}{4}$ " SS EXPANSION BOLTS EQUALLY SPACED TO SECURE FIBERGLASS INLET FLANGE TO RISER WALL—(HARDWARE SUPPLIED BY CDS TECHNOLOGIES).
6. VERIFY THAT SCREEN ASSEMBLY IS CENTERED OVER SUMP ACCESS HOLE AND ADJUST IF NECESSARY; FASTEN SCREEN TO SEPARATION SLAB USING FOUR (4) $\frac{3}{8}$ " x $3\frac{3}{4}$ " SS EXPANSION BOLTS—(HARDWARE SUPPLIED BY CDS TECHNOLOGIES).
7. GROUT PIPE CONNECTIONS TO SEAL JOINT.
8. GRADE RINGS AND/OR GROUT TO MATCH FINISHED GRADE AS NEEDED.



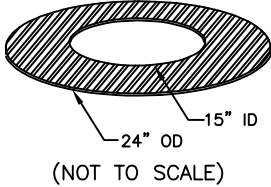
PMSU20_20
CONSTRUCTION
NOTES

JOB#	4
DATE:	
DRAWN:	
APPROV.	

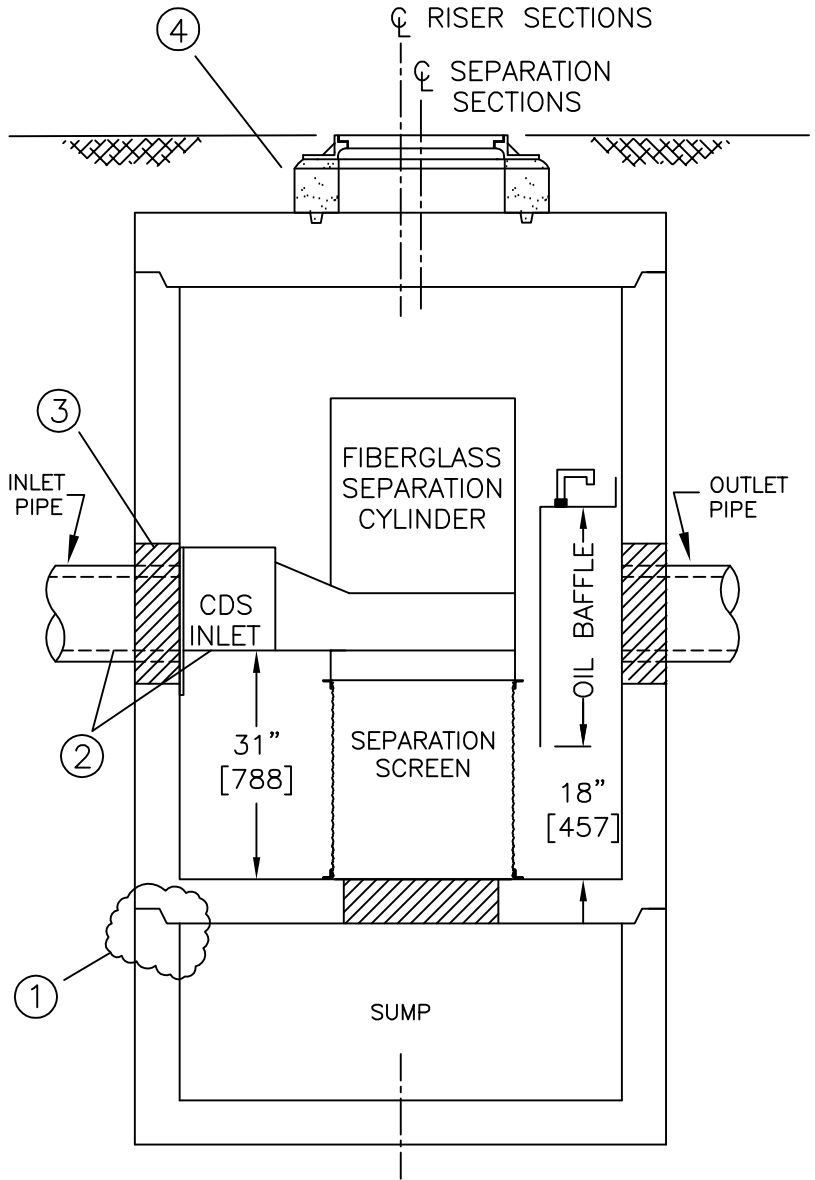
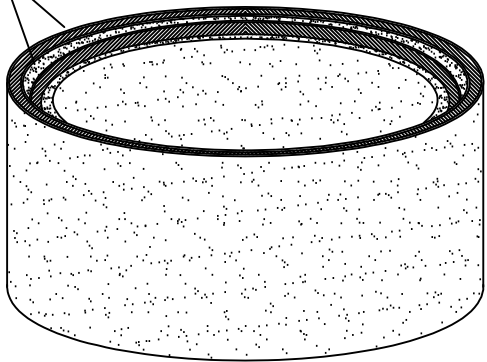
SCALE
N.T.S.
SHEET

HYDRAULIC SHEAR PLATE
TYPE 316 STAINLESS, 11 GA.

USE WHEN ADDING
SORBENT MATERIAL



PLACE 2x CONTINUOUS BANDS OF MASTIC ROPE ON VERTICAL AND HORIZONTAL SURFACES OF SUMP (MH BASE) T&G JOINT; GROUT EXTERIOR MH JOINT IF NECESSARY.



CONSTRUCTION NOTES:

1. APPLY BUTYL MASTIC TO SEAL JOINTS OF MANHOLE STRUCTURE (SEE INSET DETAIL DRAWING); APPLY GROUT TO EXTERIOR T&G JOINTS OF MH SECTIONS TO COMPLETELY SEAL IF NECESSARY (UNIT MUST BE WATER TIGHT, HOLDING WATER UP TO FLOWLINE INVERT, MINIMUM).
2. BEFORE PLACING MORE PRECAST COMPONENTS OR BACKFILLING, ENSURE FIBERGLASS INLET AND PIPE INLET INVERTS MATCH ELEVATIONS (CERTAIN JOBS WILL HAVE INLET PIPE HIGHER THAN FIBERGLASS INLET).
3. GROUT PIPE CONNECTIONS TO SEAL JOINT.
4. USE GRADE RINGS, BLOCKS AND/OR GROUT TO ENSURE COVER RIM MATCHES FINISHED GRADE. SEAL AS REQ'D.

GENERAL NOTES:

1. THE CDS UNITS ARRIVES TO THE JOB SITE WITH THE STAINLESS STEEL SCREEN CYLINDER, FIBERGLASS CYLINDER/INLET AND OIL BAFFLE PRE-INSTALLED.
2. INSTALL CDS UNIT PER CDS INSTALLATION SPECIFICATIONS.
3. CONTRACTOR TO BE EQUIPPED TO HANDLE THE HEAVIEST PICK SECTION (APPROX. 5,350 LBS.).



**CDS MODEL PMSU20_20
CONSTRUCTION NOTES**

JOB#	SCALE N.T.S.
DATE:	SHEET
DRAWN:	4
APPROV.	