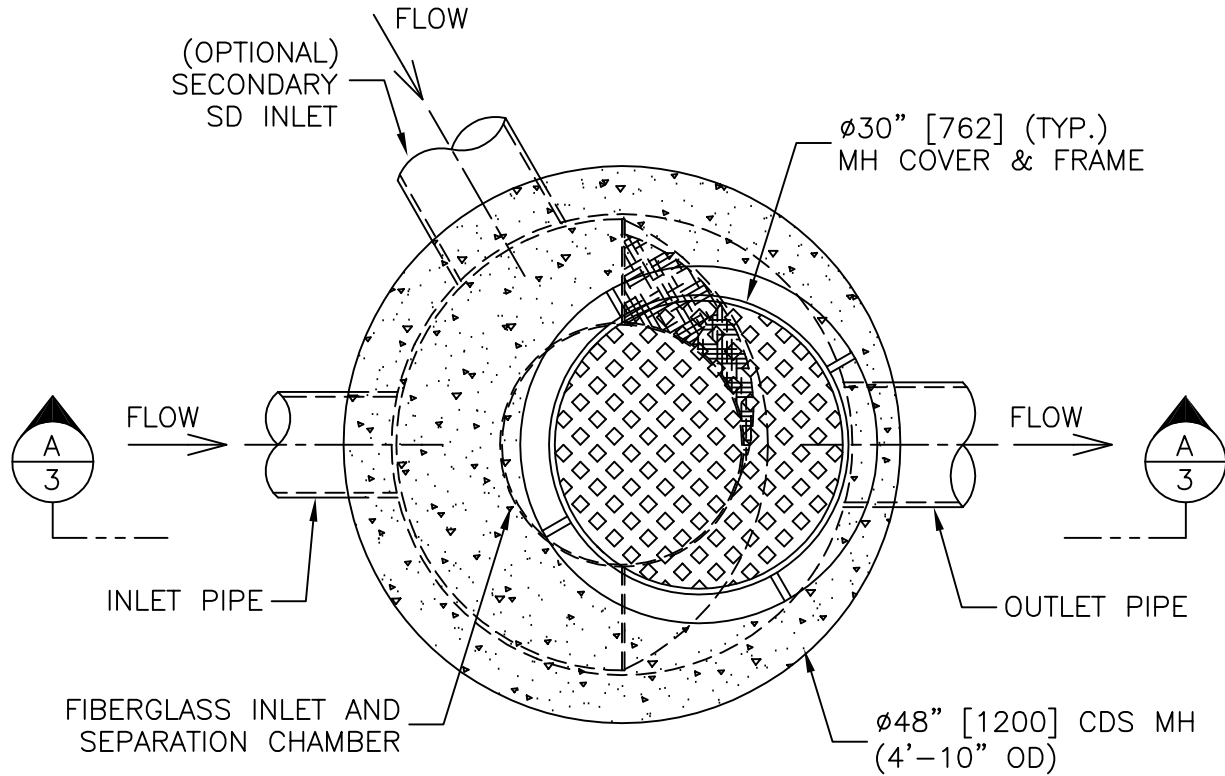


PLAN VIEW TYPICAL / GENERIC INSTALLATION



NOTE:

THE INTERNAL COMPONENTS ARE SHOWN IN THE RIGHT-HAND CONFIGURATION—THESE COMPONENTS MAY BE FURNISHED IN THE MIRROR IMAGE TO THAT SHOWN (LEFT-HAND CONFIGURATION).

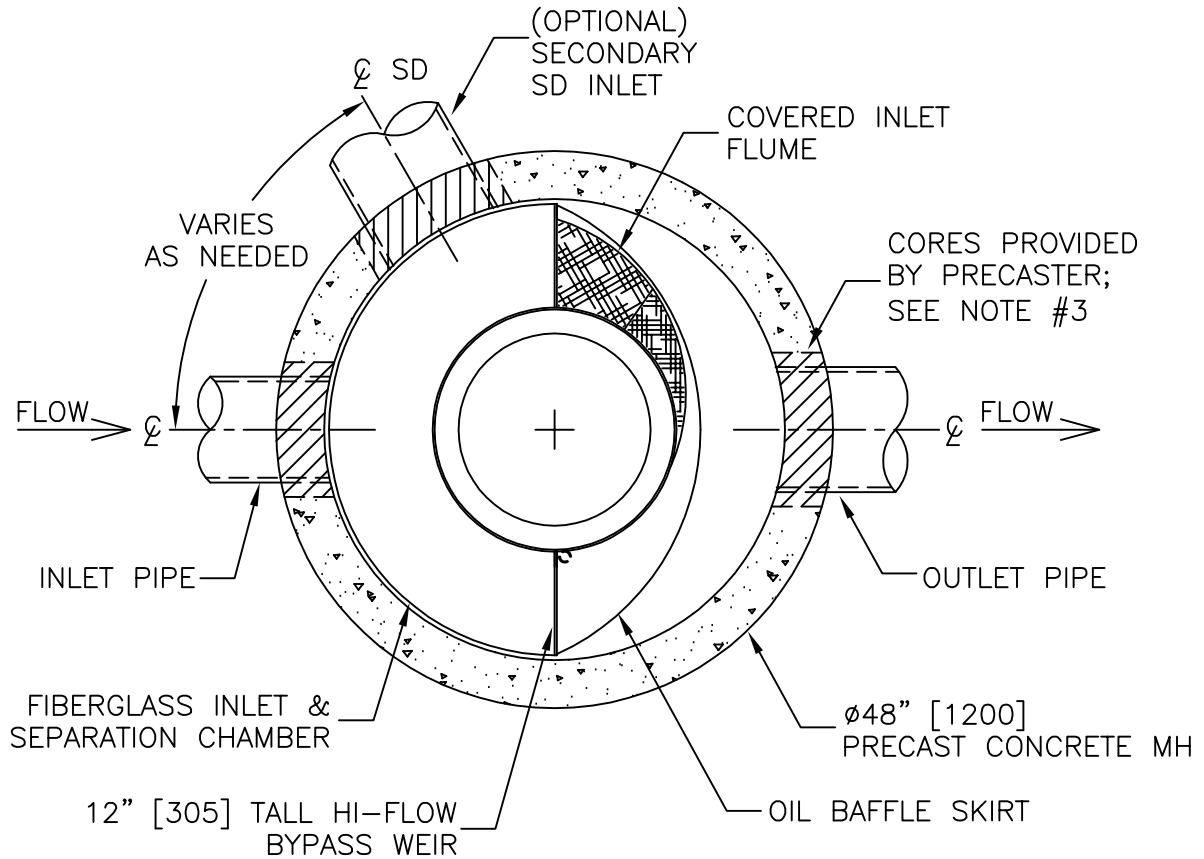
CDS MODEL PMSU20_15_4 STORM WATER TREATMENT UNIT



PROJECT NAME
PROJECT LOCATION

JOB#	XX-XX-XXX	SCALE	1:20
DATE:	X/X/XX	SHEET	1
DRAWN:	INIT		
APPROV.			

SECTION B-B TYPICAL / GENERIC INSTALLATION



NOTES:

1. THE INTERNAL COMPONENTS ARE SHOWN IN THE RIGHT-HAND CONFIGURATION.
2. FOR PROPER INSTALLATION, GREEN FLANGE ON SCREEN FACES UP; RED FLANGE FACES DOWN & FASTENS TO SEPARATION SLAB.
3. OVERSIZED CORES ARE PROVIDED TO ACCOUNT FOR DIFFERENT PIPEWALL THICKNESSES—ENSURE SUFFICIENT EXCAVATION DEPTH TO ATTAIN (EXTERNAL) SUMP INVERT ELEVATION (SEE SHEET 3).

CDS MODEL PMSU20_15_4 STORM WATER TREATMENT UNIT



PROJECT NAME
PROJECT LOCATION

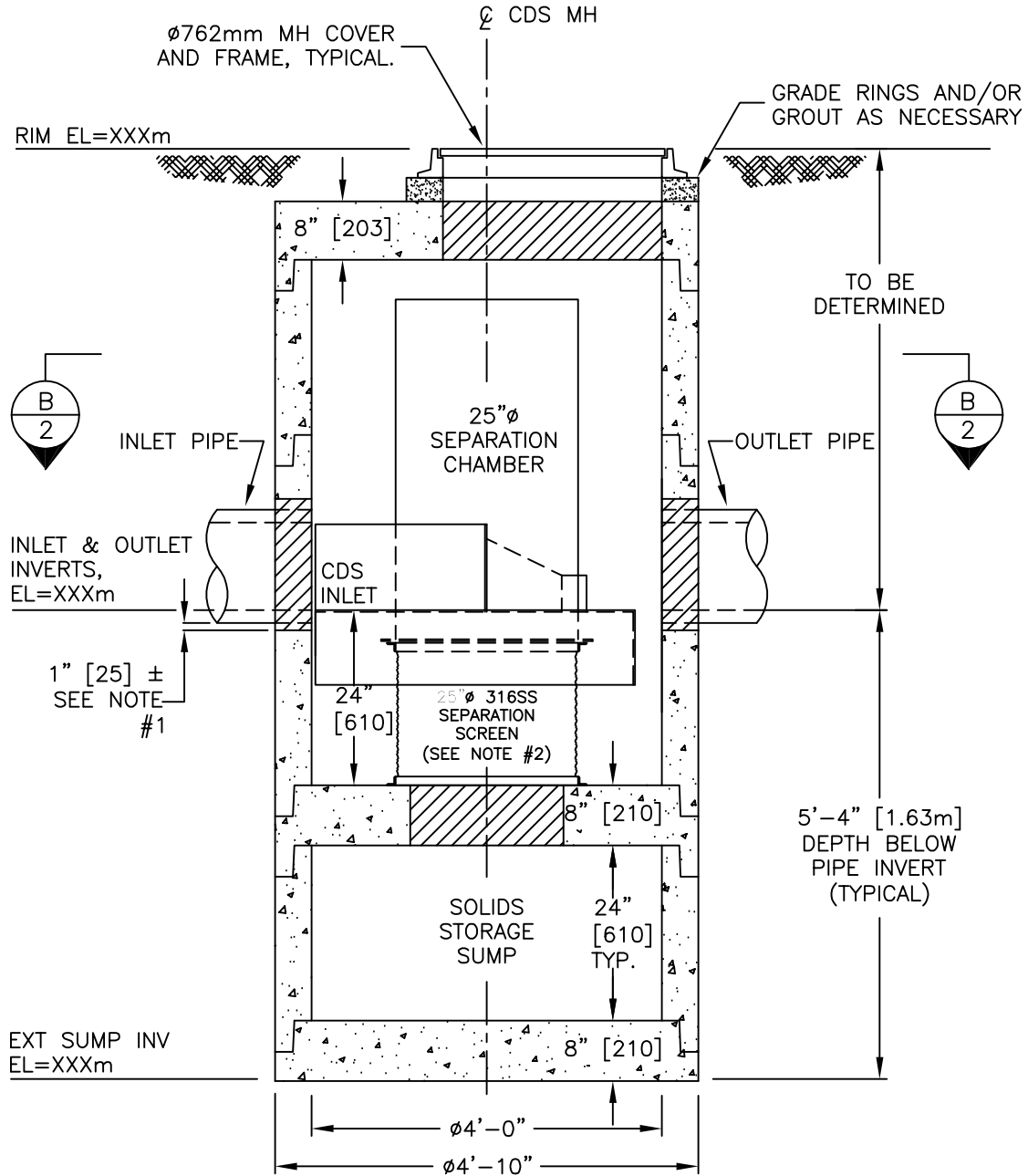
JOB#	XX-XX-XXX
DATE:	X/X/XX
DRAWN:	INIT
APPROV.	

SCALE
1:20
SHEET

2

SECTION A-A ELEVATION VIEW

TYPICAL / GENERIC INSTALLATION



NOTES:

- OVERSIZED CORES ARE PROVIDED TO ACCOUNT FOR DIFFERENT PIPEWALL THICKNESSES—ENSURE SUFFICIENT EXCAVATION DEPTH TO ATTAIN INDICATED (EXTERNAL) SUMP INVERT ELEVATION.
- FOR PROPER INSTALLATION, GREEN FLANGE ON SCREEN FACES UP & FASTENS TO FIBERGLASS CYLINDER FLANGE; RED FLANGE FASTENS TO SEPARATION SLAB WITH PROVIDED ANCHOR BOLTS.

**CDS MODEL PMSU20_15_4
STM. WTR. TREATMENT UNIT**

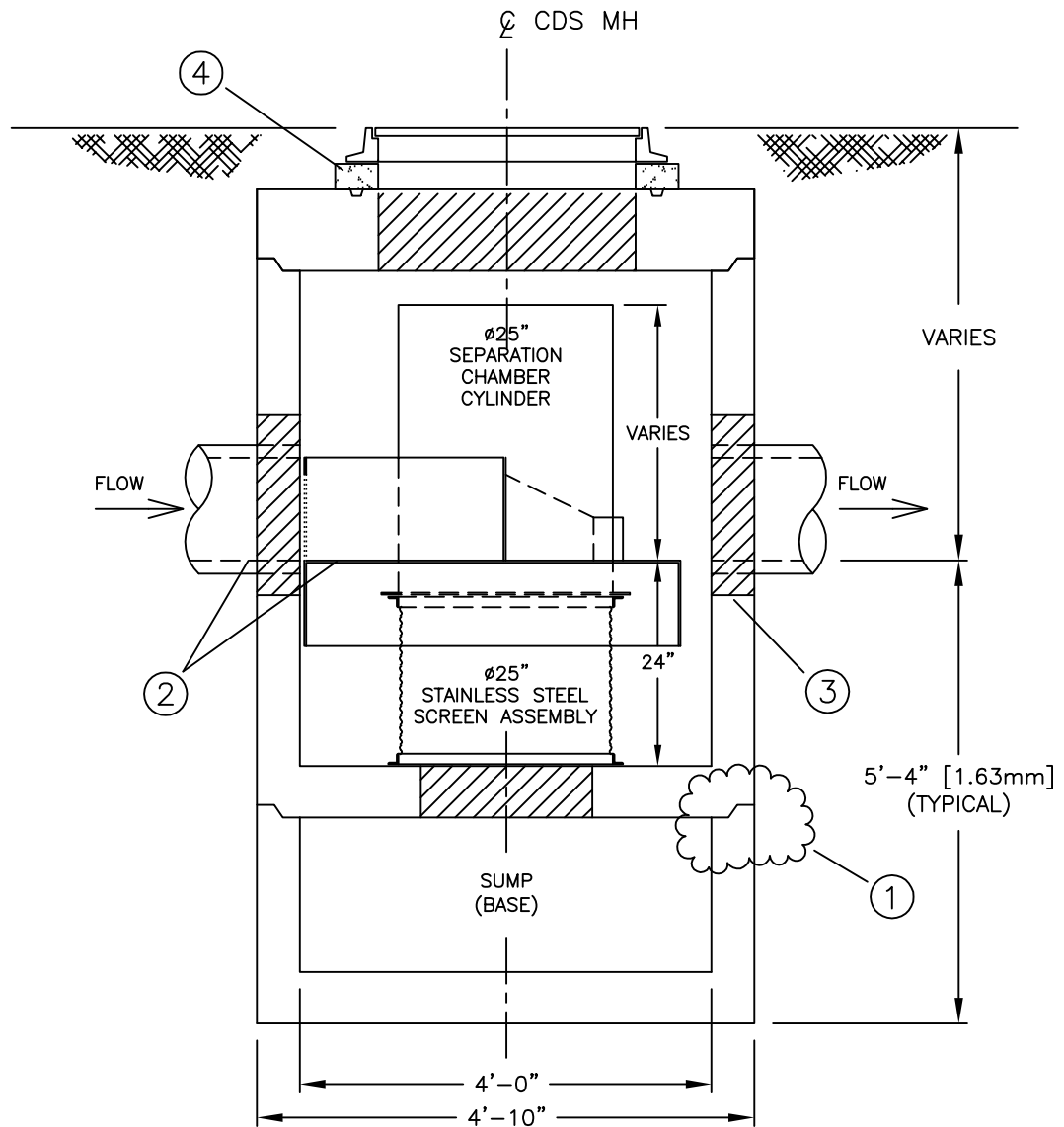


**PROJECT NAME
PROJECT LOCATION**

JOB#	XX-XX-XXX
DATE:	X/X/XX
DRAWN:	INIT
APPROV.	

SCALE
1:24
SHEET

3




CONSTRUCTION NOTES:

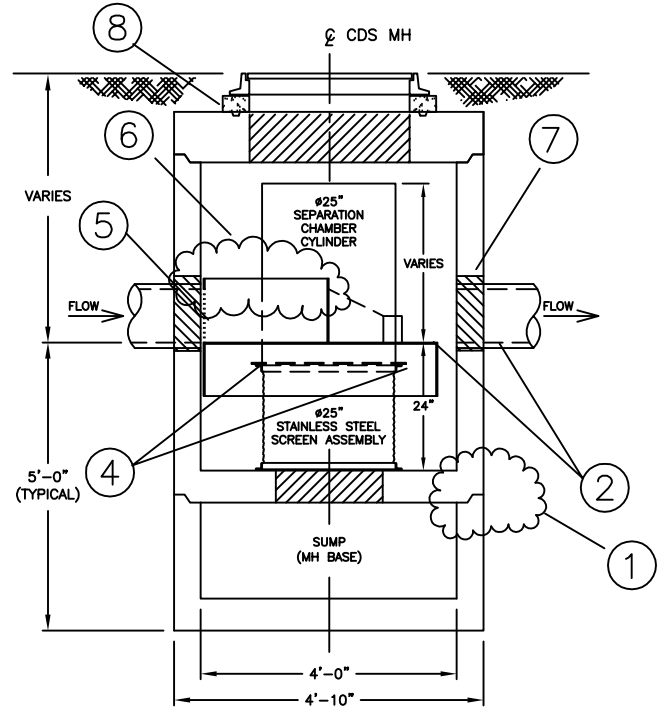
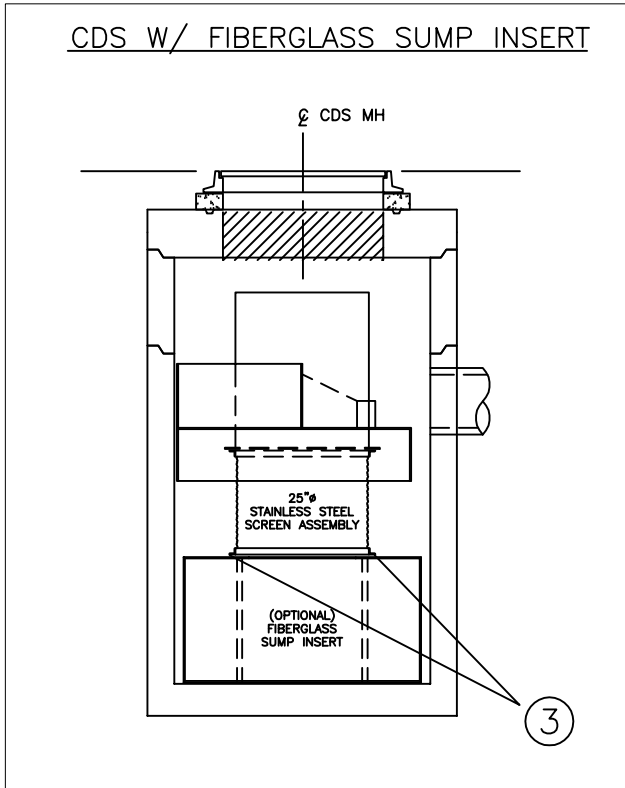
1. APPLY BUTYL MASTIC AND/OR GROUT TO SEAL JOINTS OF MANHOLE STRUCTURE. APPLY LOAD TO MASTIC SEAL IN JOINTS OF MH SECTIONS TO COMPRESS SEALANT IF NECESSARY. UNIT MUST BE WATER TIGHT, HOLDING WATER UP TO FLOWLINE INVERT (MINIMUM).
2. BEFORE PLACING MORE PRECAST COMPONENTS OR BACKFILLING, ENSURE FIBERGLASS INLET AND PIPE INVERT ELEVATIONS MATCH.
3. GROUT PIPE CONNECTIONS TO SEAL JOINT.
4. USE GRADE RINGS, BLOCKS AND/OR GROUT TO ENSURE PROPER GRATE ELEVATION. SEAL AS NECESSARY.

GENERAL NOTES:

1. CDS UNIT COMES COMPLETE W/ FIBERGLASS INLET/OIL BAFFLE & SEPARATION SCREEN ASSEMBLY PRE-INSTALLED.
2. INSTALL CDS UNIT PER CDS INSTALLATION SPECIFICATIONS.
3. CONTRACTOR TO BE EQUIPPED TO HANDLE THE HEAVIEST PICK SECTION (5,400 LBS, TYPICAL).

	CDS MODEL PMSU20_15_4 MISCELLANEOUS NOTES	JOB#	SCALE N.T.S. SHEET 4
		DATE: 5/28/03	
		DRAWN: JSF	
		APPROV.	

**INSTRUCTIONS FOR THE
INSTALLATION OF CDS
INTERNAL COMPONENTS**




CONSTRUCTION NOTES:

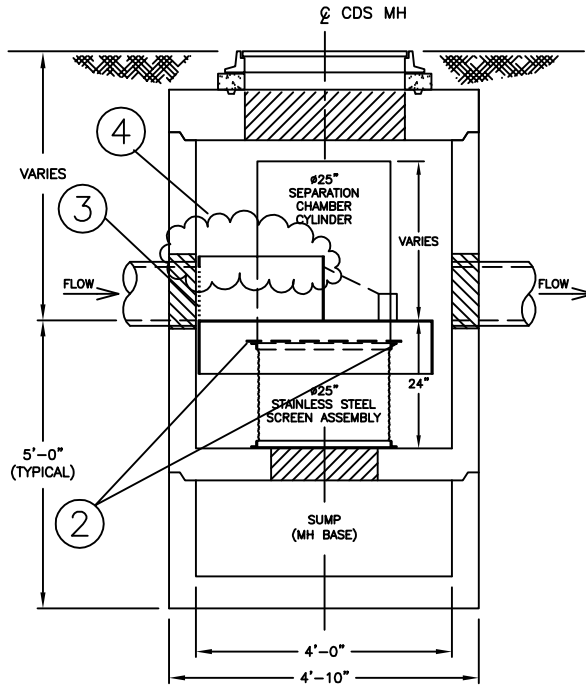
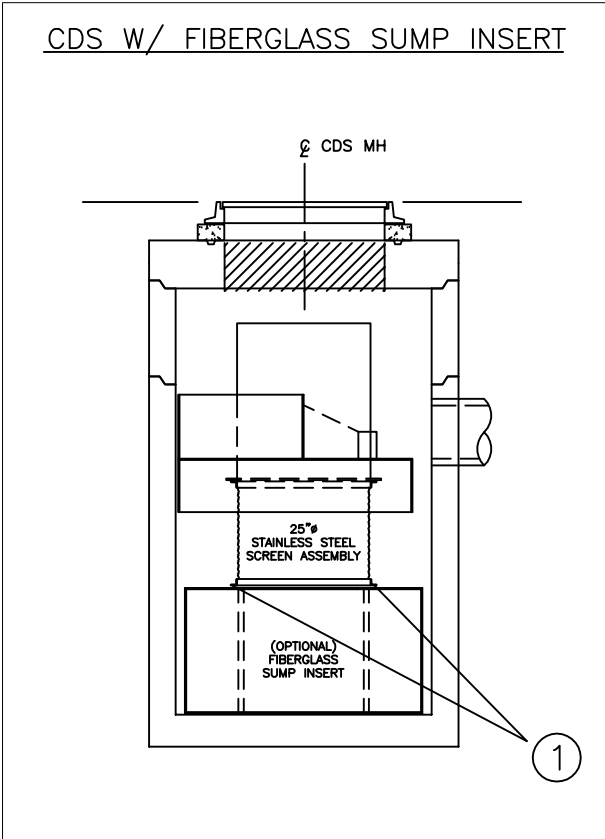
1. APPLY BUTYL MASTIC AND/OR GROUT TO SEAL JOINTS OF MANHOLE STRUCTURE. APPLY LOAD TO MASTIC SEAL IN JOINTS OF MH SECTIONS TO COMPRESS SEALANT IF NECESSARY. UNIT MUST BE WATER TIGHT UP TO FLOWLINE INVERT (MINIMUM).
2. BEFORE PLACING MORE PRECAST COMPONENTS OR BACKFILLING, ENSURE 24" FROM THE TOP OF THE SEPARATION SLAB TO PIPE INVERT.
3. (OPTIONAL FIBERGLASS SUMP INSERT ASSEMBLY)
IF APPLICABLE, PLACE STAINLESS STEEL SCREEN CYLINDER WITH THE CORRECT ORIENTATION (GREEN PAINTED FLANGE SHALL FACE UP & RED PAINTED FLANGE SHALL FACE DOWN) OVER THE SUMP OPENING & MATCH-DRILL FOUR (4) 9/16" DIAMETER HOLES THRU SCREEN FLANGE & TOP OF SUMP INSERT; BOLT SCREEN CYLINDER TO SUMP INSERT W/ PROVIDED 1/2" BOLTS & LOCKING HARDWARE.
4. ENSURE THAT STAINLESS STEEL SCREEN CYLINDER IS PROPERLY ORIENTED (GREEN PAINTED FLANGE SHALL FACE UP W/ RED PAINTED FLANGE SHALL FACE DOWN), MATCH-DRILL FOUR (4) 9/16" DIAMETER HOLES THRU SCREEN & CDS INLET FLANGES & BOLT TOGETHER W/ PROVIDED 1/2" BOLTS & LOCKING HARDWARE.
5. MARK & TRIM AWAY THE INLET FLANGE WHERE FIBERGLASS MATERIAL BLOCKS THE INLET PIPE ENTRANCE.
6. PLACE SEPARATION SCREEN & FIBERGLASS INLET/BAFFLE ASSEMBLY (& SUMP INSERT, IF APPLICABLE) IN MH & POSITION WITH INLET FLANGE AGAINST THE INSIDE WALL (ROTATE TO MATCH OPENINGS IN FLANGE WITH PIPE ORIFICE AS NEEDED); DRILL & INSERT 3/8" CONC. EXPANSION ANCHORS AT APPROXIMATELY 9" O.C. TO FASTEN CDS INLET TO MANHOLE; FILL GAP BETWEEN FIBERGLASS INLET FLANGE & MANHOLE WALL WITH WATER-STOP SEALANT AS NEEDED.
7. GROUT OR USE FLEXIBLE GASKETING TO SEAL OUTLET (& INLET, IF APPLICABLE) PIPE CONNECTION(S).
8. USE GRADE RINGS, BLOCKS AND/OR GROUT TO MATCH FINISHED GRADE – SEAL AS REQ'D.

GENERAL NOTES:

1. INSTALL CDS UNIT PER CDS INSTALLATION SPECIFICATIONS.
2. CONTRACTOR TO BE EQUIPPED TO HANDLE THE HEAVIEST PICK SECTIONS (5,000 LBS. TYPICAL)

	CDS MODEL PMSU20_15_4 MISCELLANEOUS NOTES	JOB#	SCALE N.T.S. SHEET 4
		DATE: 5/28/03	
		DRAWN: JSF	
		APPROV.	

INSTRUCTIONS FOR THE INSTALLATION OF CDS INTERNAL COMPONENTS



CDS UNIT ASSEMBLY NOTES:

1. (OPTIONAL FIBERGLASS SUMP INSERT ASSEMBLY)
IF APPLICABLE, PLACE STAINLESS STEEL SCREEN CYLINDER WITH THE CORRECT ORIENTATION (GREEN PAINTED FLANGE SHALL FACE UP & RED PAINTED FLANGE SHALL FACE DOWN) OVER THE SUMP OPENING & MATCH-DRILL FOUR (4) 9/16" DIAMETER HOLES THRU SCREEN FLANGE & TOP OF SUMP INSERT; BOLT SCREEN CYLINDER TO SUMP INSERT W/ PROVIDED 1/2" BOLTS & LOCKING HARDWARE.
2. ENSURE THAT STAINLESS STEEL SCREEN CYLINDER IS PROPERLY ORIENTED (GREEN PAINTED FLANGE SHALL FACE UP W/ RED PAINTED FLANGE SHALL FACE DOWN), MATCH-DRILL FOUR (4) 9/16" DIAMETER HOLES THRU SCREEN & CDS INLET FLANGES & BOLT TOGETHER W/ PROVIDED 1/2" BOLTS & LOCKING HARDWARE.
3. MARK & TRIM AWAY THE INLET FLANGE WHERE FIBERGLASS MATERIAL BLOCKS THE INLET PIPE ENTRANCE.
4. PLACE SEPARATION SCREEN & FIBERGLASS INLET/BAFFLE ASSEMBLY (& SUMP INSERT, IF APPLICABLE) IN MH & POSITION WITH INLET FLANGE AGAINST THE INSIDE WALL (ROTATE TO MATCH OPENINGS IN FLANGE WITH PIPE ORIFICE AS NEEDED); DRILL & INSERT 3/8" CONC. EXPANSION ANCHORS AT APPROXIMATELY 9" O.C. TO FASTEN CDS INLET TO MANHOLE; FILL GAP BETWEEN FIBERGLASS INLET FLANGE & MANHOLE WALL WITH WATER-STOP SEALANT AS NEEDED.



**CDS MODEL PMSU20_15_4
MISCELLANEOUS NOTES**

JOB#	
DATE:	5/28/03
DRAWN:	JSF
APPROV.	

SCALE
N.T.S.
SHEET

4